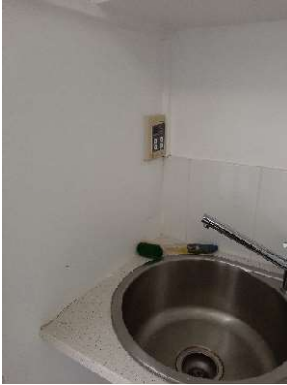


Hot water system

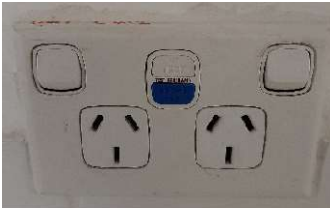
1. The panel for the hot water system is located in the kitchenette between the two bathrooms.



2. If there has been a power failure the panel will need to be turned back on. Press the on button so that the display is lit up.



3. If the panel doesn't turn on, check if the safety switch on the power point has tripped. Blue button will be popped out. Press to reset.



4. If there is still no hot water, check that the power to the outside unit is plugged in and switched on.

